

ELEKTRA™

— health + —



INSTRUCTION MANUAL

COMPRESSOR NEBULIZER KIT

Read these instructions before use and keep them safe. If you pass the appliance on, pass on the instructions too. Remove all packaging, but keep it until you are satisfied.

IMPORTANT SAFETY INSTRUCTIONS:

When using an electrical appliance, basic precautions should always be followed, including the following: Read all instruction before using this appliance.

DANGER -To reduce the risk of electric shock:

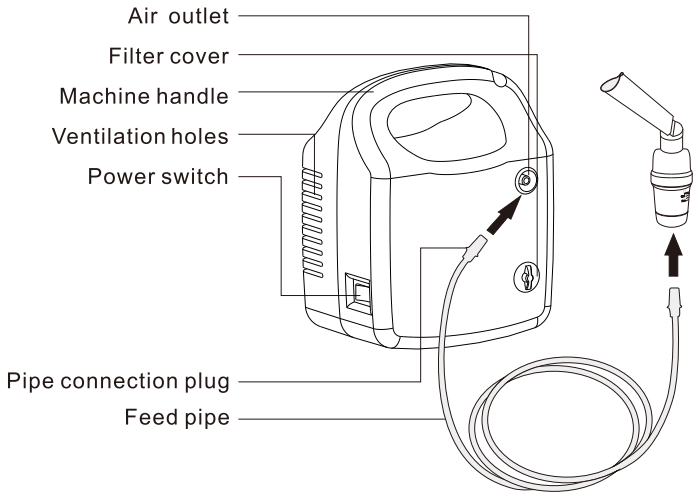
1. Always unplug this appliance from the electrical outlet immediately after using and before cleaning.
2. Do not reach for an appliance that has fallen into water. Unplug it immediately.
3. Do not use or store the appliance where it can fall or be pulled into a tub or sink. Do not place or drop into water or other liquid.

WARNING: -To reduce the risk of burns, fire, electric shock or injury to persons:

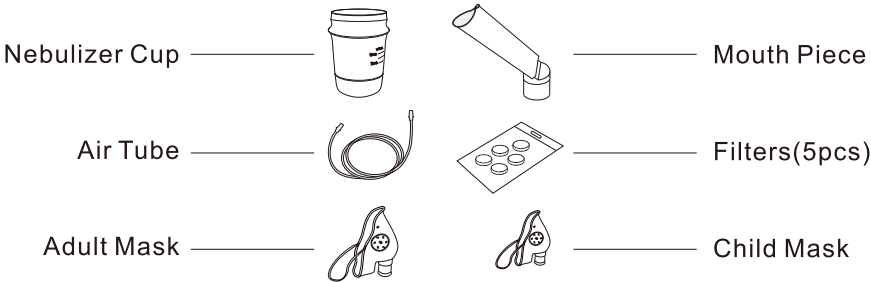
1. An appliance should NEVER be left unattended when plugged in. Unplug from outlet when not in use and before putting on or taking off parts or attachments.
2. DO NOT operate under a blanket or pillow. Excessive heating can occur and cause fire, electrical shock or injury.
3. Close supervision is necessary when this appliance is used by or near children, invalids or disabled persons.
4. Use this appliance only for its intended use as described in this manual. Do not use attachments not recommended; specifically any attachments not provided with the unit.
5. Never operate this appliance if it has a damaged cord or plug, if it is not working properly, if it has been dropped or damaged, or dropped into water. Return it to the Service Center for examination and repair.
6. Do not carry this appliance by the supply cord or use the cord as a handle.
7. Keep the cord away from heated surfaces.
8. Never operate the appliance with the air openings blocked. Keep the air openings free of lint, hair and other debris.
9. Never drop or insert any object into any opening.
10. Do not attempt to plug or unplug the unit when you have wet hands.
11. Never operate on a soft surface, such as a bed or couch, where air openings may be blocked.
12. Do not use outdoors.
13. Connect the appliance to a properly grounded outlet only.
14. If supply cord is damaged, it must be replaced by the manufacturer or its service agent.
15. All servicing of this appliance must be performed by authorized service personnel only.
16. Keep all packaging and plastic bags out of the reach of children as these pose the risk as a choking hazard.
17. Use only normal tap water. Do not add anything to the water (e.g. salt, oils, perfumes, etc ...)

FOR HOUSEHOLD USE ONLY

KNOW YOUR ELEKTRA HEALTH NEBULIZER



ACCESSORIES



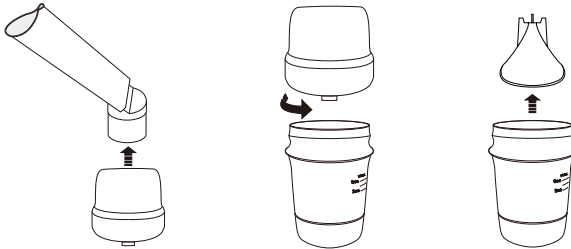
OPERATING YOUR NEBULIZER

Note: Prior to initial operation, the nebulizer should be thoroughly cleaned.

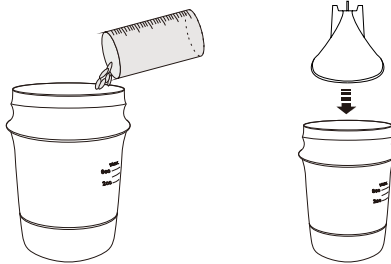
1. Place your Compressor Nebulizer on a flat and stable surface. Be sure that you can easily reach the controls when you are seated.
2. Prepare the accessories you will need.

Important: Prior to initial use, the accessories should be cleaned thoroughly.

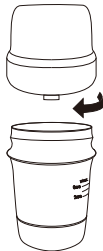
3. Remove the mouth piece, carefully twist the top part of the nebulizer cup-clockwise to disassemble the nebulizer cup, and take out the cone.



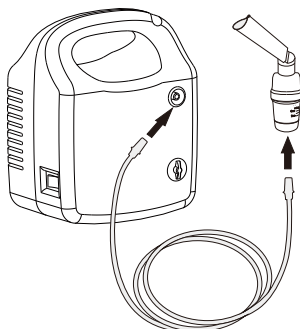
4. Fill the bottom section of the nebulizer cup with the medication prescribed by your doctor. Be sure that the cone is placed back inside before closing.



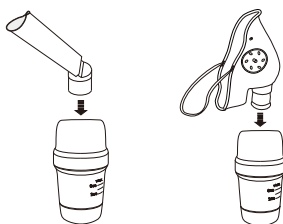
5. Carefully twist the top part clockwise to re-assemble the nebulizer cup. Please ensure that the nebulizer cup is well sealed.



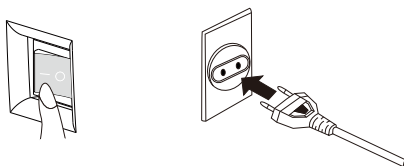
6. Attach one end of air tube to the base of the nebulizer cup.
7. Attach the other end of air tube to the air tube connector located on the front of the compressor.



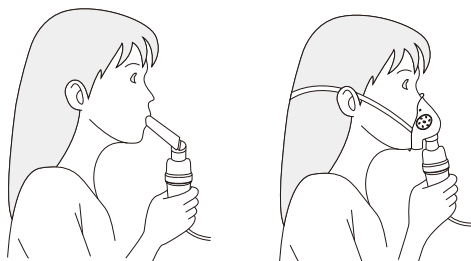
8. Attach the mouth piece or mask as required to the top section of nebulizer cup.



9. Plug the power cord into the electrical outlet. Make sure at this stage that the power switch is "OFF".



10. Press power switch to "ON" to begin your prescribed treatment. Put the mask over your face or suck on the mouth piece to start inhalation.



11. When treatment is finished, switch off the unit and unplug it from the electrical outlet.

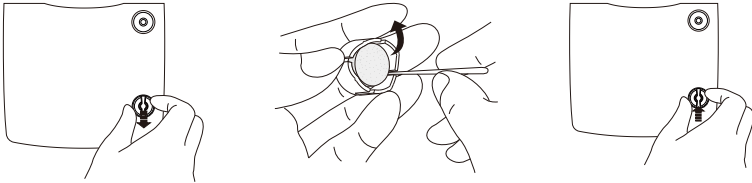
Important:

The compressor motor has a thermal protector which will shut off the unit before the unit overheats. When the thermal protector shuts the unit off, please:

- a. Switch off the unit.
- b. Unplug the unit from the electrical outlet.
- c. Wait 30 minutes for the motor to cool down before using again.
- d. Make sure the air openings are not obstructed.

Filter change

- 1. Do not operate the compressor without a filter. Do not use cotton or any other materials. Do not wash or clean the filter. Only use filters supplied by your distributor.
- 2. Change the filter every 60 days or when the filter turns gray.
- 3. Changing the filter:
 - A. Remove the filter cover.
 - B. Replace the used filter with a new one.
 - C. Replace the filter cover.
 - D. Discard the old filter.



Specifications

Power	220-240V/50Hz
Power Consumption	150W
Medication Capacity	6 ml max. (2 ml min.)
Particle Size	5µm or less accounted for more than 60%
MMAD	4 µm
Sound Level	Less than 65 dB at 1 meter
Average Nebulization Rate	≥ 0.2ml/min
Compressor Pressure Range	150 to 400 KPa
Operating Pressure Range	65 to 130 KPa
Liter Flow Range	≥ 5 lpm
Operating Temperature Range	10°C to 40°C (50°F to 104°F)
Operating Humidity Range	≤ 80% RH
Storage Temperature Range	-20°C to 55°C (-4°F to 131°F)
Storage Humidity Range	≤ 93% RH
Dimension (L x W x H)	195×155×110mm
Weight	4.3lbs (2.0kg)
Standard Accessories	Nebulizer, Nebulizer cup, Air Tube, Mouth piece, Filters (5pcs), Adult mask, Child mask

Protection against electric shock

Protection against harmful intake of water
- IPX0 (Ordinary)

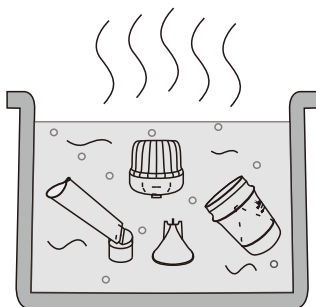
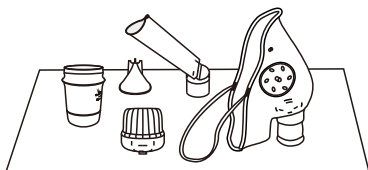
Degree of safety in the presence of flammable substances or oxygen
- No AP/APG (Not suitable for use in the presence of flammable substances or oxygen)

Mode of operation – continuous type

The performance information supplied by the manufacturer in accordance with standard EN 13544-1 and may not apply to drugs in suspension or highly viscous drugs. In the case that you may be uncertain please make contact with the drug supplier.

Care and Maintenance

1. Switch the appliance off and unplug it.
2. Wipe the body of the appliance off with a soft damp cloth. If necessary use a little washing-up liquid.
3. Disassemble the accessories and wash well after each use.
4. Pour out all the remaining medication if any is left over.
5. The nebulizer including the nebulizer lid, cone, medication cup and mouth piece can be reused at least 20 times.
6. Wash mouth piece and mask then immerse in 75% ethanol for 30 minutes, or immerse in 1000mg/L peracetic acid for 10-30 minutes. Then wash again and air dry. Pour the remaining medicine out of medicine cup and add some water then start the unit until water is finished, Wash medicine cup again in water.
7. Do not use detergents to clean any part of the unit that normally contains water.
8. Do not immerse the nebulizer in water or any other liquid.
9. Do not use harsh or abrasive cleaning agents or solvents.
10. After cleaning and sterilization, store all dry accessories in a clean and dry place.
11. For health reasons, we recommend each person should have their own nebulizer accessories, and these should not be used by other people.



After Sales Service

The appliance is not user-serviceable. If it is not working properly check:

1. You have followed the instructions properly.
2. The outlet supply is switched on.
3. The main supply fuse/circuit breaker has not blown/tripped.

If the appliance still does not work, contact the Service Centre.

Guarantee

Any defect affecting the functionality of the appliance which becomes apparent within one (1) year of its purchase, will be corrected by free repair or replacement, provided that the appliance has been used and maintained in accordance with the instructions, and has not been altered/modified, abused or misused in anyway, and is accompanied with a Proof of Purchase to validate the age of the appliance.

The Environment

Please consider the environment when disposing of packaging.

Recycle wherever possible.

When you want to dispose of this appliance please do so responsibly, or contact us to assist with the disposal, or disposal advice.



**8 Palala Street, Protec Park, Terenure Ext. 42,
Kempton Park, South Africa, 1610**

Tel: 011 393 – 1328

Fax: 011 393 – 1501

Email: info@sp-africa.com

www.sp-africa.com