

ELEKTRA™
— *comfort* —



INSTRUCTION MANUAL

ANTI-MOZZ
MOSQUITO LAMP

Read these instructions before use and keep them safe. If you pass the appliance on, pass on the instructions too. Remove all packaging, but keep it until you are satisfied.

Important Safeguards:

When using electrical appliances basic safety precautions should always be followed.

Please read the following carefully before use:

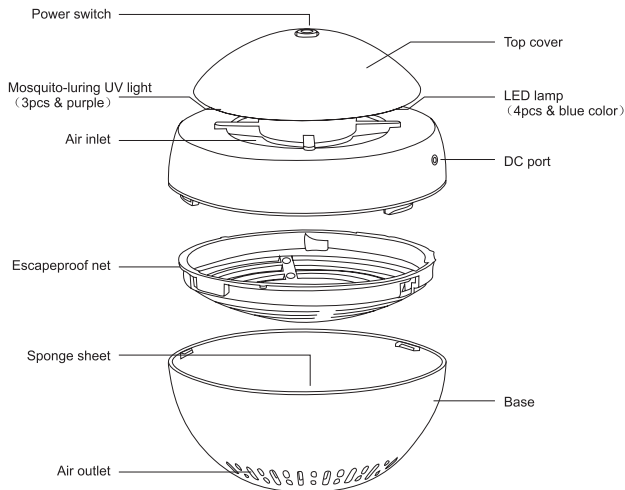
1. Always unplug the appliance immediately after use.
2. Do not use while in the bath.
3. Do not use with wet hands.
4. Do not allow the appliance to be placed or dropped into water or any other liquid.
5. Do not reach for an appliance that has fallen into water. Turn off the power supply to the appliance and then unplug from the wall socket.
6. Do not leave the appliance unattended when it is switched on.
7. Always allow the appliance to cool down before packing away.
8. Close supervision is necessary when this appliance is used by, on, or near children or invalids.
9. The appliance should be used for its intended purpose only.
10. Never use attachments not recommended or sold by the appliance manufacturer.
11. Keep the cord away from heated surfaces.
12. Check the cord regularly for wear or damage, particularly where the cord enters the appliance and the plug.
13. Never operate this appliance if it has a damaged cord or plug, if it is not working properly, if it has been dropped or damaged, or dropped into water. Call the Consumer Service Centre for examination and repair.
14. Do not wrap the power cord around the appliance, straighten after use.
15. Do not block the vents or openings.
16. Switch the appliance off when not in use.


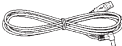

HOUSEHOLD USE ONLY

Additional Safeguards:

1. Do not try to repair the appliance yourself. Contact the approved Service Centre for examination and repair.
2. If the electrical circuit is overloaded with other electrical appliances, your appliance may not operate properly. It should then be operated on a separate circuit from other appliances.
3. Do not put any part of the body or objects into the path of the fan. This may result in bodily injury and or damage to the appliance.

Know your Elektra Appliance:



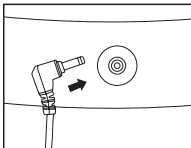
ACCESSORIES		
AC adaptor (1pc)	USB cord (1.2m)	Sponge sheet (2pcs)
		

Features:

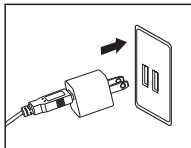
- 1. Anti-Mozz – Photo catalyst** : Your appliance attracts the mosquitos through its LED UV Lights that emit a special light wave (350nm-370nm). Once they are attracted to the light they are sucked into the trap by the fan.
- 2. LED night lamp** : The LED lights provide a soft light, making an ideal night light.
- 3. Aromatherapy** : The 2 sponge sheets have been provided for you to place drops of essential oil on. These are then placed at the bottom of the unit on the inside.
- 4. Eco Friendly** : This appliance is rated at an operating input of 2.5w.
- 5. Family Safe**

This appliance uses no chemicals.

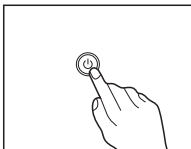
Instructions:



Plug the power cord into the DC port of the product, and the other end to the computer's USB port or AC adaptor's USB port.



Plug AC adaptor to wall outlet.

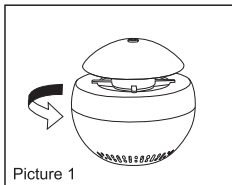


Press down the switch, product will start working.
(Please see 'FUNCTION MODE')

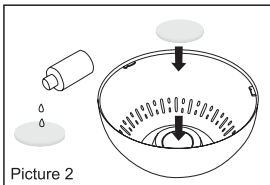
1. Press mode button once to turn on all functions.
2. Press the mode button a second time to turn off the 4 blue lights.
3. Press the mode button a third time and all functions stop except for the 4 blue lights.
4. Press the mode button a fourth time turns the unit off completely.

Aromatherapy:

1. Remove the cover on the device by turning it anticlockwise.
2. Place 2-3 drops of essential oil on the sponge sheet.
3. Place the sponge sheet in the centre of the plastic at the bottom.
4. Replace the cover by turning it clockwise.



Picture 1



Picture 2

Care and Maintenance:

1. Switch the appliance off, unplug it and let it cool down.
2. Wipe the body of the appliance off with a soft damp cloth. If necessary use a little washing-up liquid.
3. Remove deposits from the trap by brushing with a soft cloth.
4. Do not immerse the product in water or any other liquid.
5. Do not use harsh or abrasive cleaning agents or solvents.

After Sales Service:

The appliance is not user-serviceable. If it is not working properly check:

- 1.You have followed the instructions properly.
- 2.The outlet supply is switched on.
- 3.The main supply fuse/circuit breaker has not blown/tripped.

If the appliance still does not work, contact the Service Centre.

TEL: 011 393 1328
FAX: 011 393 1501
EMAIL: technical@sp-africa.com

Guarantee:

Any defect affecting the functionality of the appliance which becomes apparent within one (1) year of its purchase, will be corrected by free repair or replacement, provided that the appliance has been used and maintained in accordance with the instructions, and has not been altered, abused or misused in anyway, and is accompanied with a Proof of Purchase to validate the age of the appliance.

Specifications:

Input voltage: 100-240V 50/60Hz 2.5W

Output voltage: DC5V 1000mA

The Environment:

This appliance is rated at an operating input of 2.5 watts.

ecofriendly

Please consider the environment when disposing of packaging. Recycle wherever possible.

When you want to dispose of this appliance please do so responsibly, or contact us to assist with the disposal, or disposal advice.



8 Palala Street , Protec Park, Terenure Ext. 42,
Kempton Park, South Africa, 1610

Tel: 011 393- 1328

Fax: 011 383-1501

www.sp-africa.com